

AIM

Educational

CHARTS

OUR SENSES

Our five main senses help us to know events around us. With the help of brain, we respond through our actions.

Five Sense Organs

© copyright reserved
www.aimscientific.com

HUMAN SKELETON

BONES OF THE HAND & FOOT

© copyright reserved
www.aimscientific.com

Water Cycle

© copyright reserved
www.aimscientific.com

Xerophytic and Mesophytic Habitat

XEROPHYTIC

MESOPHYTIC AQUATIC

MESOPHYTIC WOODLAND

© copyright reserved
www.aimscientific.com

Types of DIFFERENT ROOTS

TAP ROOTS

ADVENTITIOUS ROOTS

© copyright reserved
www.aimscientific.com

Introduction

About the Company : "AIM" is one of the leading company dealing with Scientific Learning Aids for Education and Research & Laboratory Instruments and Equipment for the industry.

In view of our expansion programme, we have introduced first time a range of PRIMARY and GENERAL Educational Charts, which are useful in Development & Knowledge to the growing children. We hope our effort in bringing up this range, will definitely help the teaching community.

PRIMARY EDUCATION

PB-01
ANIMALS IN AQUATIC HABITATS

PB-02
CLASSES OF VERTEBRATES

PB-03
TYPES OF DIFFERENT CELLS

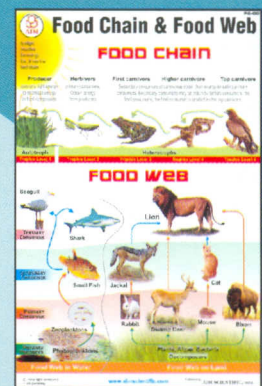
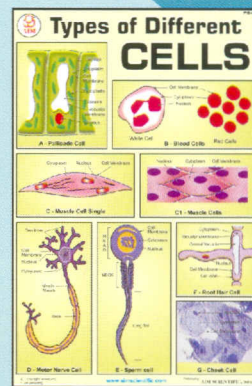
PB-04
TYPES OF DIFFERENT ROOTS

PB-05
FOOD CHAIN & FOOD WEB

PB-06
BALANCED DIET (HEALTHY DIET)

PB-07
IMMUNIZATION OF THE CHILD

PB-08
GROUPS (PHYLA) OF INVERTEBRATES



GENERAL EDUCATION

PG-06
TUBERCULOSIS (T.B.)

PG-07
BILHARZIA (Schistosomiasis)
Disease - Life Cycle

PG-20
SOLAR SYSTEM

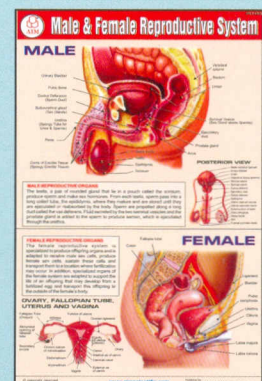
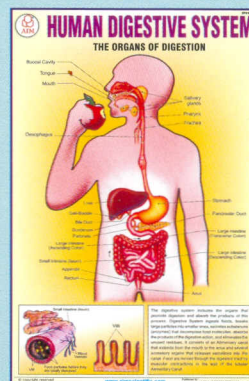
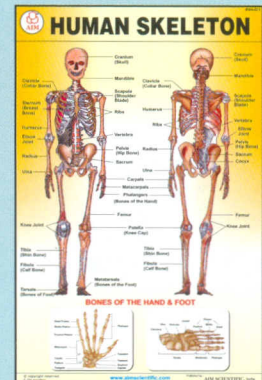
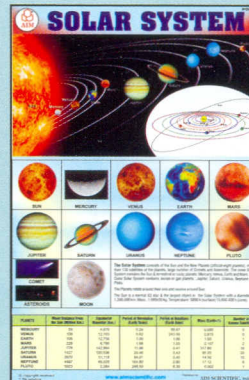
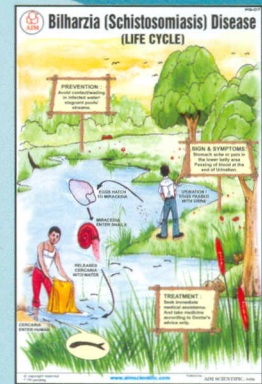
PH-01
HUMAN SKELETON

PH-02
HUMAN BLOOD SYSTEM

PH-03
HUMAN DIGESTIVE SYSTEM

PH-06
HUMAN MALE/FEMALE
REPRODUCTIVE SYSTEM

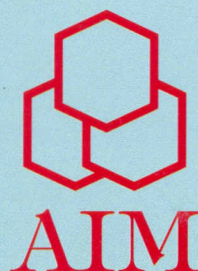
PH-08
OUR SENSES



All Charts are printed multicolour, on paper size 20" x 30" in English only duly Laminated and fitted with rollers and hanging arrangement.

We reserve the right to change, modify our designs without any prior notice.

Copyright © by AIM SCIENTIFIC
All rights reserved.



AIM SCIENTIFIC

B-8, F.F., F.I.E., PATPARGANJ INDUSTRIAL AREA,
NEW DELHI-110092, INDIA

TEL : +91-11-22157885 / 22157887 / 43054884

FAX : +91-11-43054884

E-MAIL : aimscientific@vsnl.net, info@aimscientific.com

Website : www.aimscientific.com